

TROLLOPE

MINING SERVICES

COMPANY PROFILE



COMPANY OVERVIEW

- Trollope Mining Services (2000) (Pty) Ltd provides opencast mining services, crushing & screening, rehabilitation services while operating in the Civil and Mining Industries.
- Established in 1975 the company boasts a substantial fleet of equipment and although traditionally operations were predominantly based in the coal sector, current operations have extended into coal, platinum, andalusite, gold, diamonds, crushing and screening as well as our latest venture into copper in the Democratic Republic of the Congo. All of which is in line with our strategic intent to diversify our offering and grow our geographical footprint into Africa.
- Being a privately owned entity the company operates on good sound corporate practices and is renowned for delivering a superior service in the mining sector and services industry as a medium to large contractor, always at the highest levels of production and safety.



COMPANY OVERVIEW

- Our focus is customer orientated and performance driven and we pride ourselves on the quality of workmanship on our operations. Industry best standard of maintenance of the company's substantial fleet of equipment is paramount to ensure the highest levels of availability. It is the intent that TMS remains very much self-sufficient with little or no reliance placed on external suppliers.
- The company's core philosophy is that "business is about people". A lot of time and money is therefore invested in employees and the communities in which the business operates. This is done through various mechanisms including external and internal training, Learnerships, Social Economic Development programs and charity fund raising events.
- Currently employing just over 700 people Trollope Mining Services has enjoyed a sound working relationship with several well-known companies over the last three decades including Xstrata, Exxaro Coal, Continental Coal, Sumo Coal, Anglo Coal, Kangra Coal, Canyon Coal, Universal Coal, Harmony Gold, BHP Billiton, Rhino Andalusite, Northam Platinum and Pilanesberg Platinum and Mbuyelo Coal.



EXECUTIVE - DIRECTORS



Michael Guy Crofton Hopkins – Managing Director

Higher national diploma in civil engineering from the Natal Technikon in Durban with 30 years extensive experience in the civils and mining industries, including bulk earthworks, road-building, heavy-duty civils, plant, opencast mining, quarrying and crushing & screening. Guy started at Trollope Mining services in 2010 where he has been actively involved in the strategic alignment and restructuring of the business.



Monisha Prem – Director of Corporate affairs

Monisha (BA, LLB, MBA) is a practicing attorney at her own law firm with over 15 years post articles experience. Monisha specialises in corporate and commercial law, and is a former investment banker specialising in deal-making. Monisha serves on various boards, has authored a book and is passionate about entrepreneurship.

NON EXECUTIVE DIRECTORS



Peter William Trollope – Director

BSC Agriculture from the Natal University in Pietermaritzburg, current shareholder with 41 years of experience in the mining industry with contracts in the coal, chrome, platinum and gold sectors.



John Wesley Trollope – Director

B Com. Marketing from the University of Natal, current shareholder and responsible for the plant and equipment division of the business and has 40 years of experience in the mining sector.



Daniel Hendrik Christoffel Le Roux – Director

In charge of site productivity and contracts with 39 years experience in managing mining contract operations on site, specializing in the management of on-site production, labour relations, client relations, costing and mine planning.

NON EXECUTIVE DIRECTORS



Mthetheleli Buya – Director

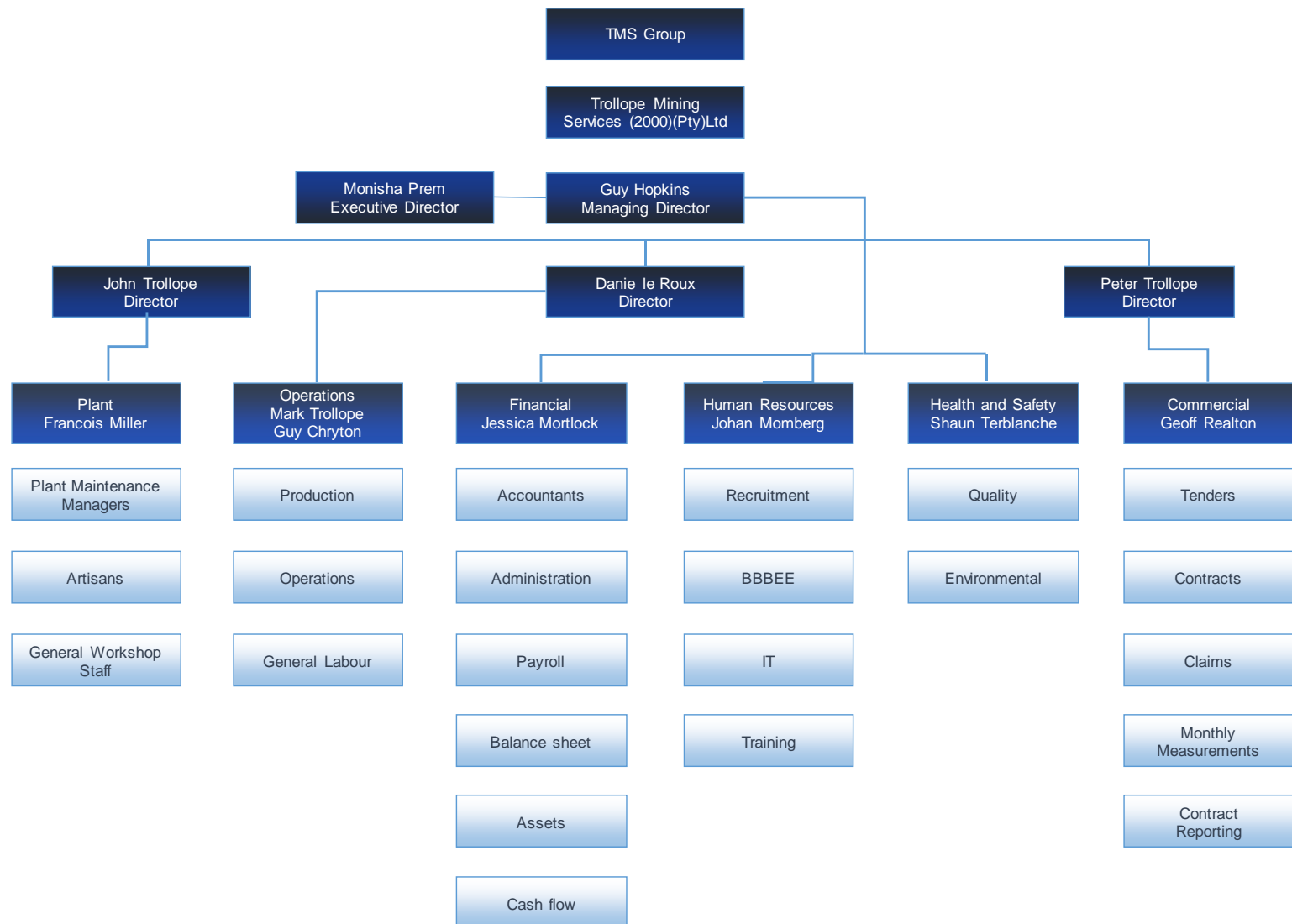
B Juris and LLB degrees from the University of Fort Hare. Owner of Sthathu, which has a number of subsidiaries with numerous equity investments in various industries. Mtheza sits on a number of boards and is the chairman of the Sthathu Group.



Nkosemntu Gladman Nika – Director

Hons B Compt degree as well as a certificate in Theory of Accounting (CTA) from the University of Pretoria. B Comm degree from the University of Fort Hare, majoring in Accounting and Business Economics. Currently holds the position of CFO and Finance Director at Petro SA (SOC) Ltd.

COMPANY ORGANOGRAM



ISO AND OSHAS ACCREDITATION

Trollope Mining Services is accredited with:

- ISO 9001 (Quality Management Systems - Requirement)
- ISO 14001 (Environmental Management System) and
- OSHAS 18001 (Occupational Health & Safety Management System)

In addition we are also accredited with the MQA to carry out In-house training.



Trollope Mining Services is an opencast mining contract company, mining on behalf of our clients. We therefore recognize that quality process improves our profitability, enhances our image, ensures customer satisfaction and leads to continuous improvement. We are therefore committed to mining and supplying a product that complies with all of our customers requirements. In order to satisfy our Stakeholders requirements we will therefore, within manageable parameters, mine and supply our clients with quality products in the most effective manner.

CURRENT OPERATIONS

Client	Name, location and type of project	Consulting Engineer - Mining Contract	Contract value	Contract duration and dates	Disciplines and scope of work
NTSHOVELO	VLAKVARKFONTEIN COLLIERY MPUMALANGA	Theuns Botha +27 84 809 8125	\$ 68,400,000	FEB 10 - JUN 18	OPENCAST MINING OF COAL 150,000 T/MTH (400,000 BCM) @ STRIP RATIO OF 2.2 M3/T ON GOING REHABILITATION
IMERY'S (FRANCE)	RHINO MINERALS LIMPOPO	Hendrik Jones +27 82 467 4532	\$ 6,498,000	JAN 2011 - DEC 2017 FROM 1996 ANNUAL RENEWAL	MINING OF ANALUSITE AND WASTE - 210,000 T/MTH FEEDING OF PLANT TRANSPORT OR PRODUCT
NORTHAM PLATINUM	NORTHAM PLATINUM MINE LIMPOPO	Danie Minaar +27 14 784 3000	\$ 5,472,000	JAN 2011 - DEC 2017 FROM 1988 ANNUAL RENEWAL	MATERIALS HANDLING AROUND PROCESSING PLANT TOTAL TONNAGE - 220,000 T/MTH
EXXARO COAL	EERSTELINGSFONTEIN BELFAST	Tinus Fouche +27 83 281 2282	\$ 19,000,000	NOV 14 -Jun 18	OPENCAST MINING OF COAL 300 000 BCM PER MONTH
EXXARO COAL	GROOTEGLUK COLLIERY ELLISRAS	Wynand van Staden +27 83 604 4371	\$ 21,888,147	JAN 17 - JUL 18	OPENCAST MINING OF COAL AND WASTE 800 000 BCM PER MONTH
EXXARO COAL	GROOTEGLUK COLLIERY ELLISRAS	Colyn de Villiers +27 84 580 2332	\$ 3,325,000	Jul 16 - Jun 18	CRUSHING AND SCREENING OF AGGREGATE
EXXARO COAL	GROOTEGLUK COLLIERY ELLISRAS	Wynand van Staden +27 83 604 4371	\$ 4,500,000	Jun 17 - Jul 18	DISCARD MANAGEMENT

CURRENT OPERATIONS – CONTINUE

Client	Name, location and type of project	Consulting Engineer - Mining Contract	Contract value	Contract duration and dates	Disciplines and scope of work
UNIVERSAL COAL	ROODEKOP	Charles Makgala +27 82 311 9837	\$ 114,000,000	AUG 16 - JUL 20	OPENCAST MINING OF COAL 250,000 T/MTH (900,000 BCM) @ STRIP RATIO OF 3.5M3/T ON GOING REHABILITATION
ELANDSFONTEIN MINING AND EXPLORATION	ELANDSFONTEIN PHOSPHATE MINE	Jacques Viljoen +27 82 823 5196	\$ 108,300,000	Jul 16 - Jun 21	OPENCAST MINING OF PHOSPHATE TOTAL OF 800 000M3/MTH
PILANESBERG PLATINUM	PPM	Aart Broekhuizen +27 82 894 8671	\$ 208,430,000	JuN 17 - Jul 21	LOAD AND HAUL 900 000M3/MTH OF WASTE AND PLATINUM ORE
BUTE - African devision					
MMG	KINSEVERE COPPER (DRC)	CHARLES BROWN +243 84 84 29900	\$ 250,000,000	Mar 17 - Apr 23	OPENCAST COPPER MINING OF 900 000M3/MONTH
TIGER RESOURCES	KIPOI COPPER RESOURCES (DRC)	MILES NAUDE miles.naude@mmg.com	\$ 150,000,000	Feb 17 - Dec 21	OPENCAST COPPER MINING OF 400 000M3/MONTH INCLUDING DRILLING, BLASTING, LOAD & HAUL AND CRUSHER FEED
ALUFER MINING LIMITED	BEL AIR MINING GUINEA	MIKE MURPHY mike.murphy@alufermining.com	\$ 180,000,000	Aug 18 - Aug 21	SURFACE MINING OF BAUXITE AT A RATE OF 1,200 TON/HOUR INCLUDING TRANSPORTING ORE TO AN EXPORT FACILITY.

HEALTH AND SAFETY

As stated earlier, TMS is a privately owned entity that operates on good sound corporate practices and is recognised for delivering a superior service in the mining sector and services industry at the highest levels of production and safety. The Company supports the responsible management of health and safety, which forms an integral part of our business ethic.

Through strategic management of health and safety, and by creating a culture of health and safety awareness and responsibility we strive to:

- Apply sound health and safety management principles and operating practices
- Comply with the client specifications, rules and requirements
- Project health and promote safety of personnel, customers and the community
- Be alert to customer needs, technological advancement and socio-economic priority
- Reduce the hazards and potential hazards in our working environment



HEALTH AND SAFETY

Our policy in this regard is therefor to:

- Provide a safe, hygienic and healthy working environment for the well-being of our employees;
- Manage our risks rather than trying to eliminate them totally;
- Ensure that the health and safety of the community is not compromised by our operation;
- Comply with the requirements of the health and safety rules and regulations;
- Motivate, educate and train employees to assume personal ownership of health and safety issues;
- Focus on the application of health and safety standards, including fire protection, good work practices and sound management principles, to ensure that all possible measures are taken to minimize losses and avoid accidents;
- Enlist the commitment of all staff to comply with the Act and Regulations and to manage and counter the hazards of our business through a well-practiced health and safety program;
- Co-operate with professional bodies in formulating health and safety standards, with the intent of making these realistic while achieving a fair balance between health and safety priorities and economic values;
- Entrench safety as a value for our people which is not compromised;
- Strive to achieve the industry best practice;
- Prevent accidents and ensure healthy working relations.

CORPORATE AND SOCIAL RESPONSIBILITY

In keeping with the Company's core philosophy, which is that "business is about people", a large amount of time and money is invested in various projects and initiatives aimed at giving back to the community and staff.

The following Corporate Social Responsibility initiatives are carried out:

- Charity Events
 - Annual Lesotho High Altitude Cycle Challenge
 - Annual Suppliers Golf Day
- Site Specific Community Projects
 - Projects are carried out either with or without clients for the local communities.
 - These are usually in the form of schools, sporting and facilities infrastructure.
- Mandela Day
 - This is usually a selected project that the staff will go and do community service at.

CORPORATE AND SOCIAL RESPONSIBILITY

TMS participates in initiatives to uplift the local communities in the areas where we work.

We have recently supported the following community based projects:

- KleinwaterColliery –paving done for a local school and is still ongoing, community training.
- VlakvarkfonteinColliery –supplied blankets, beenies, scarfs and mittens to over 150 people in the community –For Mandela Day there will be toiletries handed out to over 600 children.
- Boynton Platinum –Community training supplied
- Rhino, Northam Platinum & TBZ workshop –Revamped a container into a classroom for a school in Amandelbult– Constructed a water supply for the Regaregilecommunity –Travel into TBZ with a water cart on a daily basis to supply water to the community.
- KangraCoal –Supplied a borehole for the local community in Driefontein–Every Sunday we grade roads for 12km for the community –TMS sponsored the local Soccer Champions

CORPORATE AND SOCIAL RESPONSIBILITY

Lesotho High Altitude Cycle Challenge 2014



Date: 24 - 28 February 2014

Beneficiaries:

- Smile Foundation
- Sunshine Association
- 94.7 Bidvest Hear for Life Trust

Amount raised: R 1,300,700.00

Costs covered by TMS: R 640 671.34



CORPORATE AND SOCIAL RESPONSIBILITY

Lesotho High Altitude Cycle Challenge 2015



Date: 23 - 27 February 2015

Beneficiaries:

- Smile Foundation
- Sunshine Association
- Pathways Roodepoort

Amount raised: R 1,451 000,00

Costs covered by TMS: R 789 298,19



CORPORATE AND SOCIAL RESPONSIBILITY

Lesotho High Altitude Cycle Challenge 2016 – Xtreme Edition



XTREME EDITION



Date: 22 - 26 February 2016

Beneficiaries:

- Johannesburg Hospital School
- Vita Nova Center

Amount raised: R 1,267 850.00

Costs covered by TMS: R 476 670.00



CONTACT DETAILS



Contact Details:

Tel: +27 (0)11 281 6000

Fax: +27 (0)11 281 6017

E-mail: admin@tmsgroup.co.za

Elandsfontein 412JR, Ekurhuleni

PO Box 10046, Fonteinriet, 1464

For more information visit our website at www.tmsgroup.co.za