

mepBLITz™

DC-i5 Mobile Electropolisher

ELECTRO POLISHER DC-i5 with Solution Feed Brush



**MADE IN
AUSTRALIA**



The mepBLITz DC - i5 is the latest model of mobile electro-polisher in the mepBLITz range. It has "Patented Inverter Technology" which allows it to deliver up to 150 amps of cleaning speed, three times the speed of its predecessor and by far the fastest machine worldwide. The mepBLITz DC - i5 has the ability to use a wide range of electrodes, depending on what the user requires.

A range of different sized and shaped solution fed brushes are available, along with large copper electrodes that can be custom made to suit for large area surface polishing. The mepBLITz DC - i5 is the first machine of its kind in the world to have an optional bath add on. The bath is liquid cooled and holds 40 litres of polishing solution. No more sending those small items off to be electro-polished and having to wait to get them back, not to mention the cost involved. Proudly Australian made in all stainless steel construction and only weighing 10 kgs dry, less than half the weight of its predecessor.

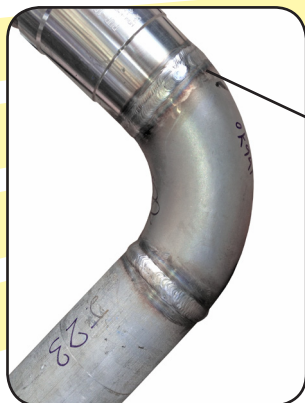
Most machines on the market can only polish at a speed of 15 to 35 amps compared with the blistering speed of the new mepBLITz DC – i5.

If you want the best in quality finish and speed then you need the new mepBLITz DC – i5.

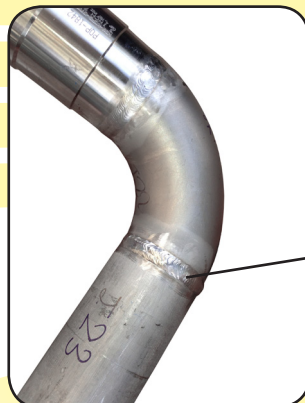
mepBLITz™

DC-i5 Mobile Electropolisher

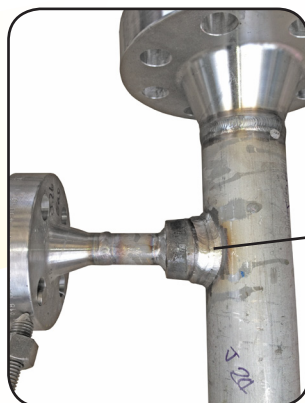
BEFORE



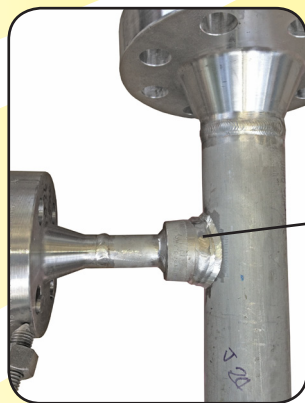
AFTER



BEFORE



AFTER



BEFORE

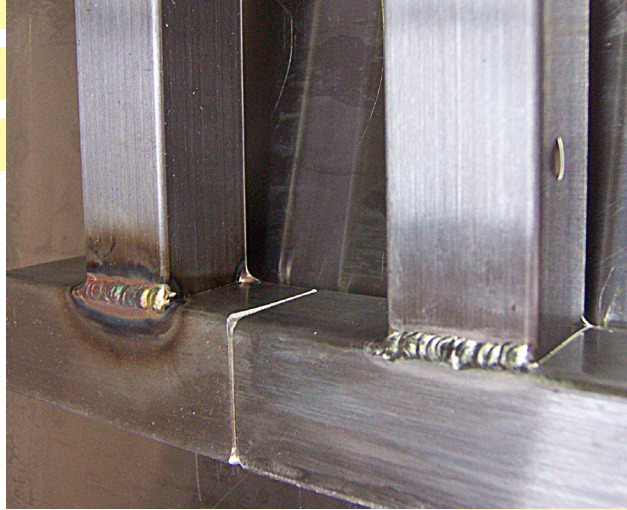


AFTER

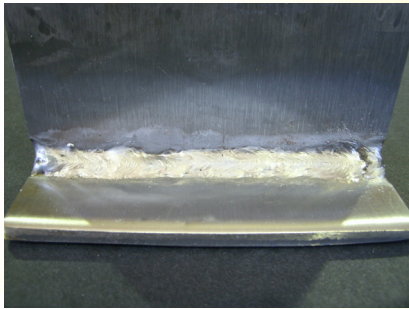


mepBLITzTM

DC-i5 Mobile Electropolisher



BEFORE & AFTER



AFTER



AFTER

mepBLITz™

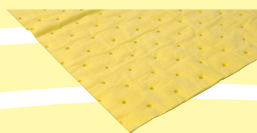
DC-i5 Mobile Electropolisher



151MEP
P1 Brush



152MEP
Bristle Sleeve



TC354
Absorbent Mat



MEPI5M60W
Solution Fed Brush



MEPI5M120W
Solution Fed Brush



MST128
Neutraliser 1 Litre



153MEP
Polishing Solution
5 Litres



153-20MEP
Polishing Solution
20 Litres

BENEFITS & SPECIFICATIONS

• Input: 240 Volts, 15 Amps	• Electro-polishing bath available
• Output: 3500 Watts, 150 Amp	• 10 kgs dry weight
• Patented Inverter Technology	• All stainless steel construction (case, pumps & clamp)
• Direct current	• 25 mm ² clamp cable with a 5 metre length
• Liquid cooled	• Simple screw on & off handle connection w/ 5 metre length
• Range of solution fed brush electrodes	• Can match any finish (2B to mirror)
• Surface electrodes available	• Works on thicknesses 0.55 mm to 50 mm



Metal Science
TECHNOLOGIES

43 Shelley Road, Moruya NSW Australia 2537

Phone/Fax: +61 2 4474 3394 Website: www.metalscience.com.au

Electropolishing Bath add on BLITz Bath (MEPi5BATH)



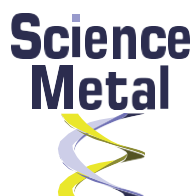
The mepBLITz DC – i5 is the first portable weld cleaning machine in the world to have an optional electro-polishing bath add on. The bath is liquid cooled and holds up to 40 litres of polishing solution. No more sending those small parts off to be electro-polished and having to wait to get them back, not to mention the cost involved with the service itself and also the freight.

This optional bath attachment is simply attached to the mepBLITz DC-i5 unit the same way that the torch handles are, by means of the screw coupling. This bath allows for full immersion of small parts (brackets etc) and depending on size, these parts can be lined up to polish multiple parts at once.

The bath comes with one single arm for racking your parts, but there is another two arms available if the parts are quite small.

Very easy to operate, as there is just one single switch to engage the bath from off to on.

If you are interested in a bath but want to make sure that it will be exactly what you need for your desired pieces, we are more than happy to have you send in a sample, which we will polish in house and return to you for inspection.



TECHNOLOGIES

The experts in weld cleaning

[**www.metalscience.com.au**](http://www.metalscience.com.au)

EASYkleen Pro S-15

DC Weld Electropolisher

The EASYkleen Pro S-15 is the latest development from MST. This 15 amp mobile unit has the ability to work effectively off 110 volts or 240 volts power input and provides the user with a power control dial.

Highly mobile and low maintenance, this unit excels on large jobs with thicker gauge steel. However, due to the power control feature this unit can also be used on smaller thin gauge jobs just as easily.



www.metalscience.com.au