



LOCTITE Nordbak® Wear Resistant Coatings

Rebuild, Repair and Protect
Industrial Equipment Catalog and Technical Guide



Excellence is our Passion



www.henkelna.com/mro



*Visit the web for an all-access pass to
distributors, safety and technical data sheets,
literature and product application assistance.*

Table of Contents

Introduction	2
LOCTITE Nordbak® Wear Resistant Coatings Selector Guide	4
Sliding Abrasion and Wear Resistance	6
Coarse/ Large Particle Abrasion	6
Fine Particle Abrasion	8
Liquid / Slurry Turbulence	10
Impact Wear Resistance	12
Specialty Wear Resistance	13
Extreme Corrosion and Erosion Resistance	14
Technical References	15
Application Case Histories	15
Surface Preparation Tips	16
Surface Preparation Grades of Blast	19
Mixing Tips	20
Application Tips	21
Typical Wear Resistant Coating Repair	22
Application Tips	23
Frequently Asked Questions	24
Troubleshooting Guide	25
Chemical Compatibility Chart	26
Application Selector Guide	27
Wear Resistant Coatings Properties Chart	28

Introduction

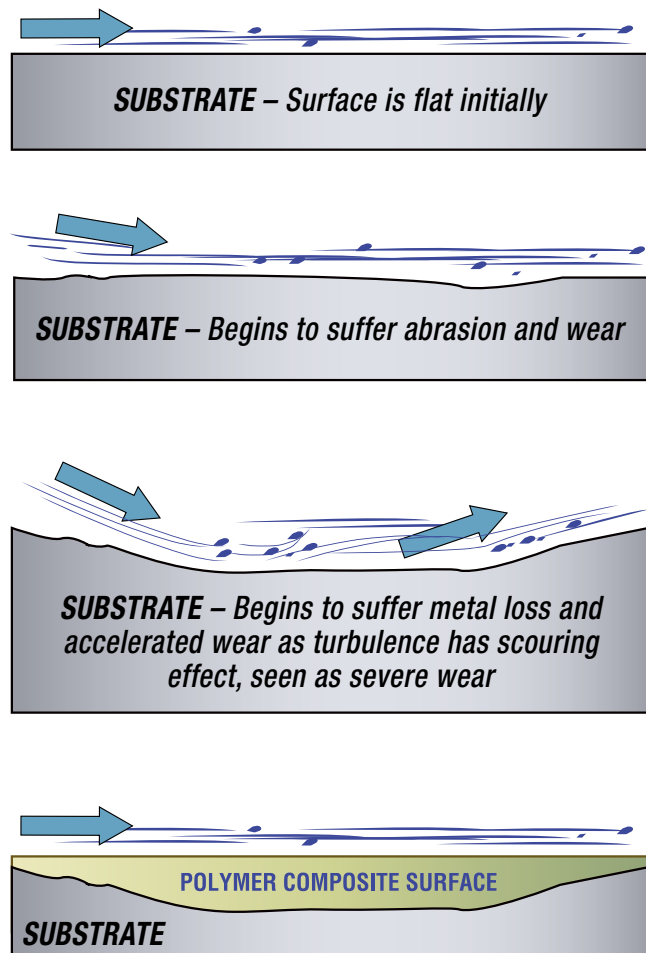
With extremely hard reinforcement fillers, Henkel's polymer composite products have excellent wear resistance and exceptional adhesion. They are designed to protect and extend the service life of a wide range of plant equipment. The composites act as a sacrificial and renewable working surface, protecting the structural integrity of the original substrate. Henkel offers a complete selection of LOCTITE Nordbak® and Fixmaster® polymer composite products to treat and protect your assets against the harshest industrial environments.

WEAR / ABRASION

Over time, even a softer solid material will eventually abrade and wear the hardest alloys. As the surface becomes weak, it is then subject to being stripped from the parent substrate, therefore, gradually reducing the thickness and structural integrity of the substrate.

Wear and abrasion can be minimized and reduced by utilizing polymer composite materials. These act in a sacrificial capacity and, therefore, wear in place of the original substrate, often lasting significantly longer than the original surface, due to their highly wear-resistant formulations.

Henkel has developed specific formulations for a wide variety of applications. These formulations can be selected to match the environment for which they are suited, such as heavy wear/abrasion, corrosive fluids or high temperature service.



LOCTITE Nordbak® and Fixmaster® composites

REBUILD, REPAIR and PROTECT

industrial equipment and surfaces, extending equipment life, improving efficiency and minimizing downtime.

CORROSION/EROSION

As corrosion takes place, it leaves a very weak and loose layer of oxide. As this oxide layer is continually stripped from the parent substrate, the thickness and structural integrity are gradually reduced, often described as the Corrosion/Erosion cycle.

Underfilm corrosion can remain active below the surface of a high build coating, making the substrate weak and ultimately leading to a failure of the coating system. Henkel's polymer composites, when applied to a correctly prepared surface, will protect against corrosive agents and lengthen the life of your substrate – asset protection!

CREATING PARTNERSHIPS

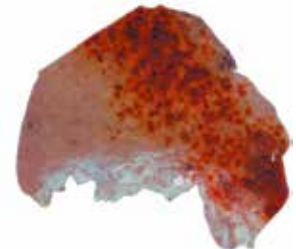
LOCTITE branded products are foremost in the business of solving and preventing customers' problems. With Fixmaster® and Nordbak® composite technology providing the foundation, customers get more than a product – they get a partner who will work side-by-side with them to create and implement innovative solutions.

FOCUSING ON CUSTOMER SUPPORT

Our highly experienced Fixmaster® and Nordbak® composite application engineers are committed to providing the highest level of technical support and assistance in the industry. Working closely with local industrial suppliers, our application engineers provide full process support, from maintenance assessment to implementation of solutions.



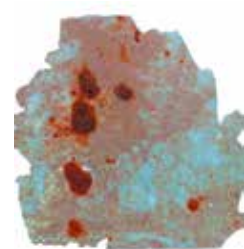
Coating delamination



Excessive corrosion causing delamination of the coating



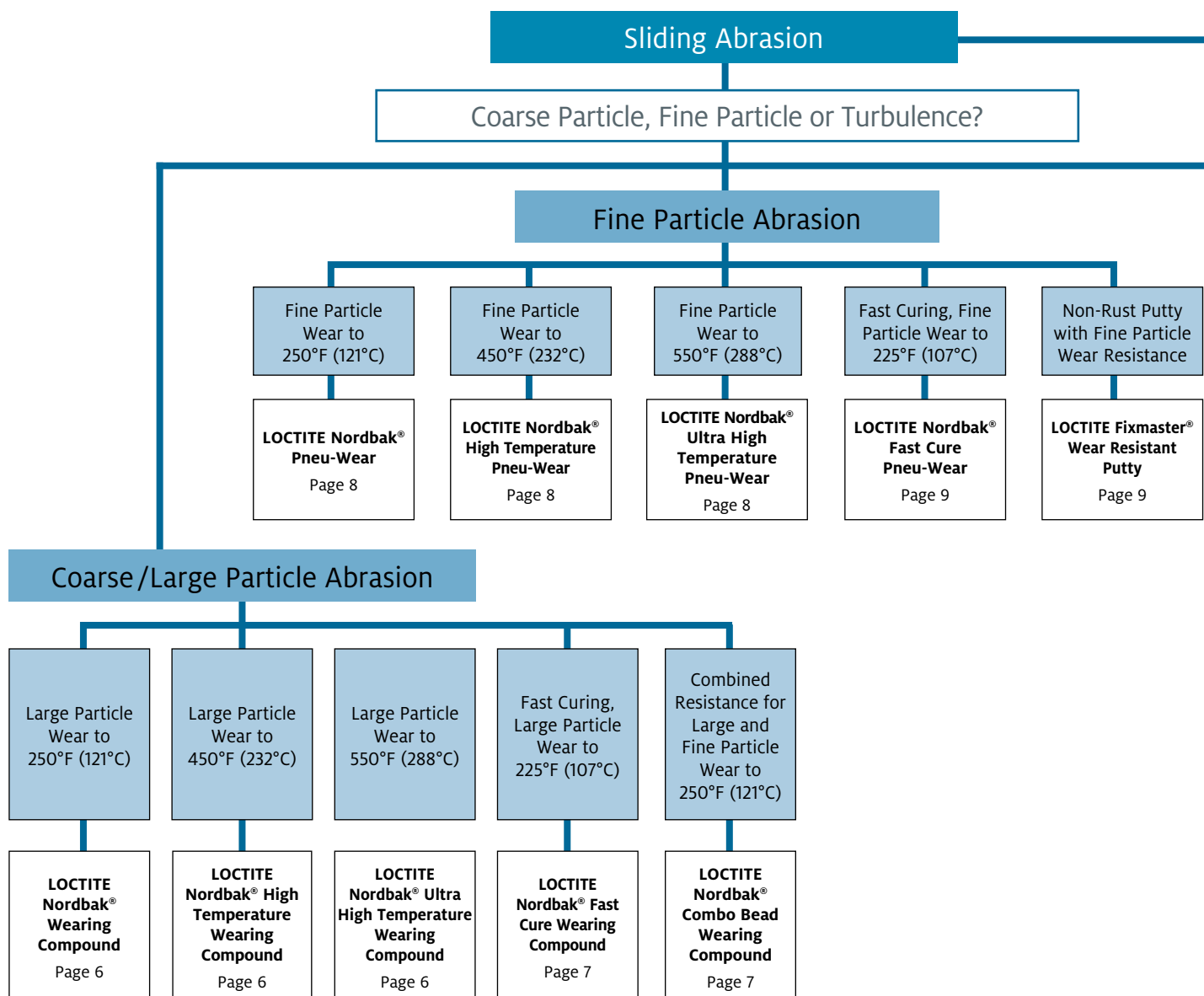
Underfilm corrosion signs



Active corrosion cells

LOCTITE Wear Resistant Coatings Selector Guide

LOCTITE Nordbak® Wear Resistant Coatings utilize the superior wear properties of ceramic and the convenience of two-part epoxies to protect equipment like pumps, chutes and augers in harsh industrial environments. Available in trowelable and brushable formulations with special fillers for tough conditions, LOCTITE Nordbak® products stand up to almost any corrosion, abrasion and wear problem you can encounter, and are ideal for all those large-scale repairs that have to last.



- ✓ Provide superior protection from environmental impact
- ✓ Eliminate and break corrosion/erosion cycle
- ✓ Non-shrink and non-sag formulations
- ✓ High compression strength
- ✓ Broad chemical resistance
- ✓ Broad range tailored to specific applications

ARE YOU EXPERIENCING MECHANICAL WEAR/ABRASION OR CORROSION/EROSION?

Wear/Abrasion

Sliding Abrasion or Impact Resistance?

Liquid/Slurry Turbulence

Low Friction,
Turbulence
Resistance to
200°F (93°C)

**LOCTITE
Nordbak®
Brushable
Ceramic**
Page 10

Low Friction,
Turbulence
Resistance to
550°F (288°C)

**LOCTITE
Nordbak® High
Temperature
Brushable
Ceramic**
Page 11

Large Surface,
Low Friction,
Turbulence
Resistance to
200°F (93°C)

**LOCTITE
Nordbak®
Sprayable
Ceramic**
Page 11

Extreme Corrosion/Erosion

**LOCTITE Nordbak® Chemical
Resistant Coating**
Page 14

Impact

**LOCTITE
Nordbak®
High Impact
Wearing
Compound**
Page 12

**LOCTITE
Fixmaster®
Flex 80™ Putty**
Page 12

Specialty

**LOCTITE
PC9628™
Nordbak®
Castable
Wearing
Compound**
Page 13

**LOCTITE
Nordbak®
Ceramic Tile
Adhesive**
Page 13



Sliding Abrasion and Wear Resistance

LOCTITE Nordbak® Wear Resistant Coatings for repair and protection against mechanical wear and sliding abrasion.

COARSE/LARGE PARTICLE ABRASION

LOCTITE NORDBAK® WEARING COMPOUND

Coarse Abrasion and Corrosion Resistance

A two-part epoxy designed to protect, rebuild and repair high wear areas of processing equipment under typical service temperatures up to 250°F (121°C). Ceramic-filled for outstanding resistance to abrasion and corrosion. This compound is trowelable and non-sagging and, therefore, suitable for overhead and irregular surfaces. It is used to resist sliding abrasion when large particles are present ($\frac{1}{16}$ inch).

Typical Applications:

- Relining pump housings
- Reclaiming, protecting and sealing against corrosion of:
 - ✓ Handling equipment
 - ✓ Worn elbows
 - ✓ Cyclone and separator bodies
 - ✓ Dust collectors and exhausters
 - ✓ Pump liners and impellers
 - ✓ Fan blades and housings
 - ✓ Chute linings and hoppers

Advantages:

- Renews worn surfaces fast – reduces downtime
- Extends wear life – resists sliding abrasive wear and eliminates costly wear to part inventory
- Will not sag or shrink – provides abrasion resistance on overhead and irregular surfaces
- Easy to mix and use



5 lb. kit – Item # 1324008

25 lb. kit – Item # 1323940

Need to get a faster cure*?

Use LOCTITE Nordbak® PC 7223™ Wearing Compound Cure Accelerator to get a functional cure time of 2 to 3 hours, depending on temperature.

Item #	Size
1728412	2.73 lbs.

* Use only with 25 lb. kit, Item # 1323940



LOCTITE NORDBAK® HIGH AND ULTRA HIGH TEMPERATURE WEARING COMPOUNDS

Coarse Particle Abrasion and Corrosion Resistance at High Temperatures

These epoxy compounds perform like LOCTITE Nordbak® Wearing Compound, while protecting equipment in high heat environments up to 450°F and 550°F (232°C and 288°C), where conventional repair systems fail.



25 lb. kit – Item # 99112 – High Temperature

25 lb. kit – Item # 96392 – Ultra High Temperature



LOCTITE NORDBAK® FAST CURE WEARING COMPOUND

Coarse Abrasion and Corrosion Resistance, While Curing Faster

This faster curing version performs like standard LOCTITE Nordbak® Wearing Compound, while offering a working time of 10 minutes and reducing total equipment downtime to as little as three hours.



6 lb. kit – Item # 96373

LOCTITE NORDBAK® COMBO BEAD WEARING COMPOUND

Both Coarse and Fine Particle Abrasion and Corrosion Resistance

LOCTITE Nordbak® Combo Bead Wearing Compound contains both large and small ceramic beads, offering better wear properties, when both coarse/large and fine particles are present.



6 lb. kit – Item # 96303

Did You Know?

Traditional versus Modern

Traditional repair methods, such as hard face welding, are time consuming and expensive.

Alternatively, LOCTITE Nordbak® composite products are easily applied and offer superior compressive strength and protection qualities.

Consider the following comparison of the process required to repair a 600 cm² surface area:

HARD FACE WELD

- STEP 1:** Prepare surface.
STEP 2: Preheat rods and substrate.
STEP 3: Lay (6 mm x 3 mm beads) x 210 mm long. Overlap each bead by 50 percent.
STEP 4: Lay second pass of beads to achieve 6 mm thickness. Total of 176 passes.
STEP 5: Relieve stress caused by application of heat.

TOTAL LABOR = 8 HOURS

LOCTITE NORDBAK® WEARING COMPOUND

- STEP 1:** Prepare surface.
STEP 2: Mix resin and hardener.
STEP 3: Apply to surface with trowel.

TOTAL LABOR = 1 HOUR

Additional Benefits:

- NO specialized labor required
- NO heat distortion of the substrate
- NO equipment required

Type	Working Time	Functional Cure	Maximum Operating Temperature
LOCTITE Nordbak® Wearing Compound	30 minutes @ 77°F (25°C)	7 hours @ 77°F (25°C)	250°F (121°C)
LOCTITE Nordbak® High Temperature Wearing Compound	30 minutes @ 77°F (25°C)	**	450°F (232°C)
LOCTITE Nordbak® Ultra High Temperature Wearing Compound	30 minutes @ 77°F (25°C)	**	550°F (288°C)
LOCTITE Nordbak® Fast Cure Wearing Compound	10 minutes @ 77°F (25°C)	3 hours @ 77°F (25°C)	225°F (107°C)
LOCTITE Nordbak® Combo Bead Wearing Compound	25 minutes @ 77°F (25°C)	8 hours @ 77°F (25°C)	250°F (121°C)

** Requires post cure. See product description sheet.

TIPS & TRICKS

LOCTITE Fixmaster® and Nordbak® Curing Times

Working time and cure depend on temperature and mass.

- The higher the temperature, the faster the cure
- The larger the mass of material mixed, the faster the cure

To speed the cure of composites at low temperature:

- Store composite at room temperature
- Pre-heat repair surface until warm to the touch

To slow the cure of composites at high temperature:

- Mix composites in small masses to prevent rapid curing
- Cool resin/hardener components

FINE PARTICLE ABRASION

LOCTITE NORDBAK® PNEU-WEAR

Fine Particle Abrasion Resistance

A two-component epoxy, filled with small ceramic beads and silicon carbide, for protecting processing equipment from fine particle abrasion. This trowelable and non-sag epoxy is recommended for rebuilding, repairing and protecting high wear areas under typical dry service temperatures of up to 250°F (121°C). It won't sag or shrink, so it is also suitable for providing abrasion resistance on overhead and vertical surfaces. It is used to resist sliding abrasion, when small particles are present (<1/64 inch).

Typical Applications:

- Providing protective lining in pneumatic conveying systems
- Repairing and providing abrasion resistance to:
 - ✓ Elbows
 - ✓ Slurry pumps
 - ✓ Cyclones
 - ✓ Chutes
 - ✓ Dust collectors
 - ✓ Hoppers
 - ✓ Pump Housing
- Installation in new equipment prior to placement in service

Advantages:

- Won't sag or shrink – provides abrasion resistance on overhead and vertical surfaces, and conforms to odd shapes
- Easy to mix and use – renews worn surfaces fast, reduces downtime
- Small ceramic bead filled – resists fine particle sliding abrasion, prolongs equipment life



3 lb. kit – Item # 98383
25 lb. kit – Item # 98382

Need to get a faster cure*?

Use LOCTITE Nordbak® PC 7224™ Pneu Wear Cure Accelerator to get a functional cure time of two to three hours, depending on temperature.

Item #	Size
1736175	2.49 lbs.

* Use only with 25 lb. kit, item # 1323940



LOCTITE NORDBAK® HIGH AND ULTRA HIGH TEMPERATURE PNEU-WEAR

Fine Particle Abrasion Resistance at High Temperatures

High temperature versions of LOCTITE Nordbak® Pneu-Wear designed for hot environments. These trowelable and non-sag, two-part epoxies resist fine particle abrasion under typical dry service temperatures up to 450°F (232°C) and 550°F (288°C).



25 lb. kit – Item # 98372 – High Temperature
25 lb. kit – Item # 96332 – Ultra High Temperature



Did You Know?

100% Solids

LOCTITE Fixmaster® and Nordbak® composites are formulated with 100 percent solids. This means that unlike solvent-based systems, LOCTITE Fixmaster® and Nordbak® composites will not shrink when cured.

LOCTITE NORDBAK® FAST CURE PNEU-WEAR

Fine Particle Abrasion Resistance, While Curing Faster

LOCTITE Nordbak® Fast Cure Pneu-Wear performs like standard LOCTITE Nordbak® Pneu-Wear, while offering a working time of 10 minutes and reducing total equipment downtime to as little as three hours.

LOCTITE FIXMASTER® WEAR RESISTANT PUTTY

Resistance to Non-Sagging and Abrasion

Ceramic fibers give this trowelable, corrosion-resistant putty excellent wear and abrasion resistance properties under typical service temperatures up to 225°F (107°C). It cures to a smooth, low-friction finish for equipment exposed to wear, erosion and cavitation.

Typical Applications:

- Re-profiling pitting caused by cavitation or corrosion
- Providing protective coating in or on: pipes, pump elbows, transitions, butterfly valves, deflection plates and tanks



6 lb. kit – Item # 96363
25 lb. kit – Item # 1117828*



1 lb. kit – Item # 98742
3 lb. kit – Item # 98743

Type	Working Time	Functional Cure	Maximum Operating Temperature
LOCTITE Nordbak® Pneu-Wear	30 minutes @ 77°F (25°C)	6 hours @ 77°F (25°C)	250°F (121°C)
LOCTITE Nordbak® High Temperature Pneu-Wear	30 minutes @ 77°F (25°C)	**	450°F (232°C)
LOCTITE Nordbak® Ultra High Temperature Pneu-Wear	30 minutes @ 77°F (25°C)	**	550°F (288°C)
LOCTITE Nordbak® Fast Cure Pneu-Wear	10 minutes @ 77°F (25°C)	3 hours @ 77°F (25°C)	225°F (107°C)
LOCTITE Nordbak® Wear Resistant Putty	30 minutes @ 77°F (25°C)	6 hours @ 77°F (25°C)	225°F (107°C)

** Requires post cure. See product description sheet.

+ Made-to-Order Item.



LIQUID/SLURRY TURBULENCE

LOCTITE NORDBAK® BRUSHABLE CERAMIC

Brushable Protective Coating Against Liquid/Slurry Turbulence and Cavitation

An ultra-smooth, ceramic-reinforced epoxy that provides a high-gloss, low-friction coating to protect against turbulence, abrasion and cavitation under typical dry service temperatures up to 200°F (93°C). Used by itself, it is recommended for sealing and protecting equipment from corrosion and wear. It also works as a topcoat over LOCTITE Nordbak® Wearing Compound or LOCTITE Nordbak® Pneu-Wear for applications requiring surface rebuilding and lasting protection. Alternative coat colors can be used to indicate wear.

Typical Applications:

- Installation in new equipment prior to placement in service
- Providing a smooth, protective, abrasion-resistant coating
- Lining tanks and chutes
- Resurfacing and repairing:
 - ✓ Rudders and pintel housings
 - ✓ Condensers
 - ✓ Cooling pump impellers
 - ✓ Heat exchangers – butterfly valves
 - ✓ Cavitated pumps
- Used as topcoat over wearing compounds for a smooth, high-gloss finish

Advantages:

- Ceramic and silicon carbide filled – an industry first that provides maximum protection
- Easy to mix and use – ease of application reduces downtime
- Meets requirements of USDA for incidental food contact
- Ultra-smooth brushable consistency – high-gloss finish to fight friction, turbulence and protect against cavitation
- Superior adhesion – forms a solid bond

⁺ Made-to-Order Item.



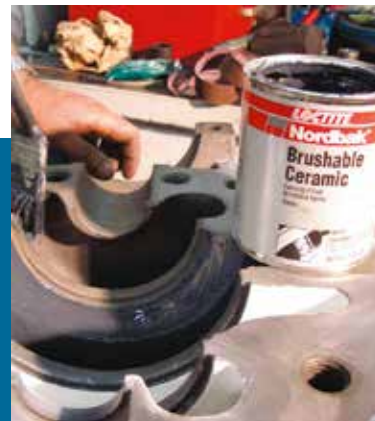
2 lb. kit (White) – Item # 96443
 2 lb. kit (Grey) – Item # 98733
 6 lb. kit (Grey) – Item # 98732
 12 lb. kit (Grey) – Item # 997367⁺

Did You Know?

Visual Wear Indicator

When applying two coats of NEW LOCTITE Nordbak® Brushable Ceramic, a different color can be used for each: grey and white. When

the first coat begins to wear, the second color coat will show through, providing an accurate visual indicator of wear.



TIPS & TRICKS

Preventing Flash Rusting

In high humidity conditions, flash rusting of a newly prepared metal surface can develop within minutes, causing contamination, which will need to be removed again before a coating is applied.

Application of a “hold coat,” which is simply a thin coat of LOCTITE Nordbak® Brushable Ceramic applied as soon as possible after preparing a metal surface, will prevent flash rusting. The applicator should concentrate on edges,

corners and hard-to-reach areas first and then “fill in” the remaining areas until totally covered. This process will also ensure optimal adhesion of subsequent LOCTITE Fixmaster® coatings such as Wear Resistant Putty or Superior Metal, which can be applied within minutes of the “hold coat”, or while still tacky.



LOCTITE NORDBAK® HIGH TEMPERATURE BRUSHABLE CERAMIC

Brushable Protective Coating against Liquid/Slurry Turbulence and Cavitation at High Temperatures

A brushable two-part epoxy designed to protect against turbulence, abrasion and cavitation under extreme heat. Typical dry service temperatures up to 550°F (288°C).

Typical Applications:

- Protecting exhausters from cyclic heat and corrosion
- Repairing heat exchangers and condensers
- Lining tanks and chutes
- Repairing butterfly valves



2 lb. kit – Item # 96433
12 lb. kit (Grey) – Item # 997369⁺

LOCTITE NORDBAK® SPRAYABLE CERAMIC

Wear and Chemical Protection Coating for Large Surfaces

A two-component, sprayable epoxy product that creates a smooth, low-friction coating combating turbulence and cavitation on components, such as pump housings and impellers and improving equipment efficiency. Designed to protect and extend the service life of a wide range of plant equipment, Nordbak® Sprayable Ceramic provides excellent wear resistance and superior adhesion.

Typical Applications:

- Wear- and chemical-protection coating on larger surfaces such as tank linings, mixing vessels, pump housings and centrifuge components, both internal and external
- Corrosion protection on plant equipment
- Corrosion protection on smaller or more intricate areas that are difficult to reach with a brush



900 ml cartridge – Item # 1389509

Type	Working Time	Functional Cure	Maximum Operating Temperature	Typical Application Thickness
LOCTITE Nordbak® Brushable Ceramic – Grey	30 minutes @ 77°F (25°C)	6 hours @ 77°F (25°C)	200°F (93°C)	40 mils
LOCTITE Nordbak® Brushable Ceramic – White	15 minutes @ 77°F (25°C)	6 hours @ 77°F (25°C)	200°F (93°C)	40 mils
LOCTITE Nordbak® High Temperature Brushable Ceramic	120 minutes @ 77°F (25°C)	**	550°F (288°C)	40 mils
LOCTITE Nordbak® Sprayable Ceramic	40 minutes @ 77°F (25°C)	6 hours @ 77°F (25°C)	200°F (93°C)	20 mils

** Requires post cure. See product description sheet.

⁺ Made-to-Order Item.

Impact Wear Resistance

LOCTITE NORDBAK® HIGH IMPACT WEARING COMPOUND

Impact and Sliding Abrasion Resistance

A rubber-modified, two-part epoxy that offers wear and impact resistance properties, not usually found in epoxy formulations. With impact resistance superior to ceramic tile, this product is for applications where both sliding abrasion and impact are present, under typical dry service temperatures up to 250°F (121°C).

Typical Applications:

- Protecting and sealing against corrosion of:
 - ✓ Screen decks
 - ✓ Dredge pump liners
 - ✓ Drop boxes
 - ✓ Hoppers
 - ✓ Pump impellers
- Installation in new equipment prior to placement in service

Advantages:

- Cures to ceramic hardness – resists sliding abrasive wear
- Will not sag or shrink – conforms to overhead and irregular surfaces; application versatility
- Renews worn surfaces fast – reduces downtime
- Impact resistant – resists mild impact at 45° angles



25 lb. kit – Item # 1327836

LOCTITE FIXMASTER® FLEX 80™ PUTTY

Impact and Sliding Abrasion Resistance

This trowelable, two-part urethane putty rebuilds and repairs rubber parts and linings. It provides impact-, abrasion- and corrosion-resistant protection to processing and pneumatic conveying equipment. Recommended for applications where speed of cure is not critical under typical dry service temperatures up to 180°F (82°C).

Typical Applications:

- Lining pipe elbow
- Repairing rubber couplings
- Repairing rubber and urethane components
- Re-profiling pump liners
- Adhering overlapping sheeting
- Patching and repairing conveyor belts

Advantages:

- Resists abrasion and impact – for durable repairs
- Easy to mix and use – speeds repair time, reduces downtime
- Combines properties of rubber and urethane – remains resilient
- Urethane – resists abrasion, impact and corrosion
- Unaffected by oil, grease or water



1 lb. kit – Item # 97423
25 lb. kit – Item # 97422

Type	Working Time	Functional Cure	Maximum Operating Temperature
LOCTITE Nordbak® High Impact Wearing Compound	30 minutes @ 77°F (25°C)	6 hours @ 77°F (25°C)	250°F (121°C)
LOCTITE Fixmaster® Flex 80™ Putty	20 minutes @ 77°F (25°C)	8 hours @ 77°F (25°C)	180°F (82°C)

Specialty Wear Resistance

LOCTITE PC9628™ NORDBAK® CASTABLE WEARING COMPOUND

For Casting Wear Resistant Parts

A three-part epoxy that can be cast into a mold, or formed to make ceramic replacement parts. This pourable compound has ceramic beads, giving parts excellent resistance to wear and abrasion.

Typical Applications:

- Installation in new equipment prior to placement in service
- Cast-in-place wear plates
- Lining cyclone apexes
- Filling flat back elbows

Advantages:

- Cures to ceramic hardness that resists sliding abrasive wear
- Easy to mix and use – has application versatility
- Pourable consistency for molding cast parts
- Replaces removable parts and reduces costly inventories



25 lb. kit – Item # 98992

LOCTITE NORDBAK® CERAMIC TILE ADHESIVE

For Securing Ceramic Tiles

A two-component, high-strength epoxy for securing ceramic wear tiles to vertical, horizontal or overhead surfaces. This trowelable compound offers excellent shock and impact resistance.

Typical Applications:

- Bonds ceramic wear tiles
- Patches holes in pressure systems
- Secures vertical anchor bolts
- General-purpose bonding

Advantages:

- Non-sag paste – can be applied vertically, horizontally and overhead
- Easy to mix and use – saves time
- Will not break or chip – withstands shock and impact
- Adheres to most clean surfaces – versatile



20 lb. kit – Item # 1690646

Type	Working Time	Functional Cure	Maximum Operating Temperature
LOCTITE PC9628™ Nordbak® Castable Wearing Compound	30 minutes @ 77°F (25°C)	6 hours @ 77°F (25°C)	250°F (121°C)
LOCTITE Nordbak® Ceramic Tile Adhesive	15 minutes @ 77°F (25°C)	12 hours @ 77°F (25°C)	200°F (93°C)

** Requires post cure. See product description sheet.

+ Made-to-Order Item.

Extreme Corrosion and Erosion Resistance

LOCTITE NORDBAK® CHEMICAL RESISTANT COATING

Chemical Resistant Brushable Coating

This advanced, two-part epoxy is designed to protect equipment against extreme chemical attack and corrosion under typical dry service temperatures up to 150°F (65°C). It forms a smooth, glossy, low-friction finish that protects against turbulence and cavitation. Its low viscosity means it can be applied by brush or pressure sprayed.

Typical Applications:

- Resurfacing tube sheets, condensers, cooling pump impellers, butterfly valves and cavitated pumps
- Resurfacing and repairing rudders and pintel housings
- Lining tanks and chutes
- Lining chemical containment areas
- Protects the exterior surfaces of equipment exposed to chemical fumes
- Installation in new equipment prior to placement in service

Advantages:

- Protects surfaces from extreme chemical attack
- Easy to mix and use
- Brush applied
- Smooth finish protects against friction, turbulence and cavitation
- Superior adhesion – bonds well to all metal substrates



12 lb. kit – Item # 96092



TIPS & TRICKS

Pressure Spraying LOCTITE Nordbak® Products

LOCTITE Nordbak® Chemical Resistant Coating is suitable for brush, roller and pressure spray application.

Pressure spraying LOCTITE Nordbak® Chemical Resistant Coating can be achieved with standard pressure pot or airless systems with a tungsten tip, orifice size of 0.19 to 0.21 mm and a maximum hose length of 3 to 5 meters. Depending on climate conditions and technique, up to four of the 5.43 kg kits can be sprayed through the line before cleaning is required, which will cover approximately 20 square meters.

A solvent, such as industrial paint thinners or acetone, should be used to clean equipment. Cleaning may be required more frequently if the product and ambient temperatures are higher, to prevent the line being clogged by the curing product.

Technical References

APPLICATION CASE HISTORIES

PUMP CASINGS AND IMPELLERS

Pump casings and impellers are subject to wear from abrasive slurries and solids, cavitation and chemical attack. Each of these can wear down internal sections of pump casings.

Some of the common wear areas include the cutwater, wear ring seats, impeller vane tips and inside the volute.

Repair heavy surface wear to pump casings and components using LOCTITE Nordbak® Wear Resistant Coatings. The ceramic beads provide superior wear resistance to ensure extended product life and greater pump efficiency. Once repaired, apply a coat of LOCTITE Nordbak® Chemical Resistant Coating for superior resistance to chemical environments.



Coating a pump volute with LOCTITE Nordbak® Brushable Ceramic



Repairing a pump impeller with LOCTITE Nordbak® Wear Resistant Putty

SMELTER BAG HOUSE

A smelter bag house operates at high temperatures and, in this case, was subjected to extreme chemical attack by sulphur, paragoethite dust and moisture. The combination of these elements will cause corrosion and the ultimate failure of equipment unless protected.

During a recent shutdown at a smelter, the metal surfaces of the dryer in its bag house were coated with LOCTITE Nordbak® High Temperature Brushable Ceramic.

LOCTITE Nordbak® High Temperature Brushable Ceramic is highly resistant to chemical attack under typical service temperatures up to 550°F (288°C).

Two coats were applied with trowels and brushes, which were then cured before returning to service.



Bag houses are subjected to extreme heat, moisture and chemical attack.



Applying LOCTITE Nordbak® High Temperature Brushable Ceramic

Technical References

PIPES AND DUCTS

Pipes and ducts are a common wear point in almost every industrial plant. The plant pictured below was forced to repair or replace duct elbows every three months at significant cost of labor and material.

After application of LOCTITE Nordbak® Pneu-Wear, the same pipe elbows remained in service for three years without need for further repair.



Plant pipe elbow, repaired with LOCTITE Nordbak® Pneu-Wear

IRON ORE RECLAIMING BUCKET

A major iron ore miner had severe abrasion problems with its reclaimer buckets, due to the continuous sliding abrasion caused by the digging and reclaiming action.

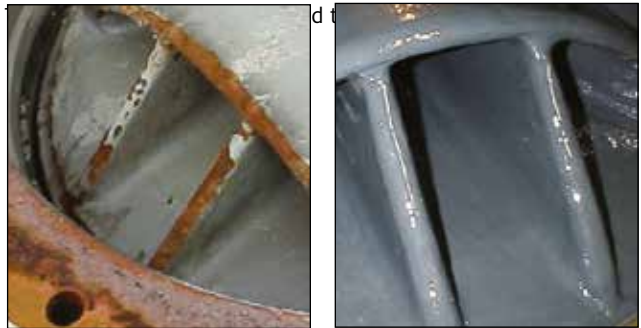
The problem was fixed and repairs to the reclaimer were reduced by the application of a LOCTITE Nordbak® Wearing Compound. The result was less costly downtime and improved availability of valuable labor, which could be reallocated to other problem areas.

BUTTERFLY VALVES

A butterfly control valve at a wastewater treatment plant was corroded and, therefore, unable to seal effectively.

The components were abrasive blasted and a “hold coat” of LOCTITE Nordbak® Brushable Ceramic (White) was applied to seal the newly cleaned surface.

The rough and corroded edges of the valve were then re-profiled with LOCTITE Fixmaster® Wear Resistant Putty, before a final coat of LOCTITE Nordbak® Brushable Ceramic (Grey) was applied. The two coat colors can be utilized as a wear indicator for any future repairs or maintenance.



The corroded butterfly valve before and after repair

Surface Preparation Tips

The successful application of any LOCTITE Fixmaster® or Nordbak® polymer composite product is largely dependent on correct surface preparation. For this reason, it is critical that all applications begin with a thorough preparation of the repair surface in keeping with the instructions in this section.

Technical References

GENERAL SURFACE PREPARATION

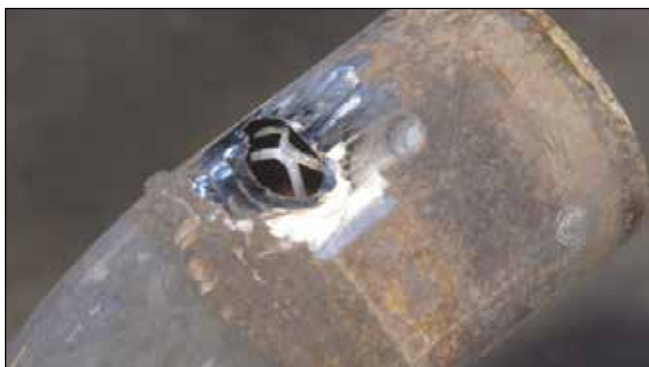
Ensure that the surface is dry and stop all liquid leakage. Remove all dirt, paint, rust and other contaminants by abrasive blasting or other suitable mechanical techniques.

Degrease thoroughly using LOCTITE ODC-Free Cleaner and Degreaser or LOCTITE Natural Blue® Biodegradable Cleaner and Degreaser.

Provide a profile by abrasive blasting or other mechanical means.

To bond a composite to a badly degraded surface or to fill large voids, first tack weld wire mesh over the damaged area, then fill the prepared area with the composite.

To prevent adhesion to a surface, when casting parts or in tooling applications, coat the surface with LOCTITE Silicone Lubricant (Item # 51360) or other release agent.



The wire mesh reinforces the repair area and forms a mechanical backing for the epoxy.

CLEANING THE SURFACE

Clean the surface with LOCTITE ODC-Free Cleaner and Degreaser or LOCTITE Natural Blue® Biodegradable Cleaner and Degreaser.

Areas immersed in oil must be cleaned repeatedly to draw the oil out of the surface. Use a heat gun to force oil out of the pores. Allow the surface to cool, then degrease again.

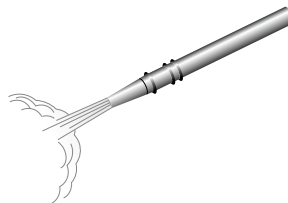
After cleaning, roughen the surface to produce a good profile. The following methods may be used, but in all cases the objective is to obtain an anchor profile of 0.003 to 0.005 inches (75 to 125 microns).

Abrasive blast using an angular grit, such as aluminum oxide or silicon carbide. Round abrasive grit should not be used. High velocity water blasting with an abrasive medium is also recommended. (See [Figure 1.](#))

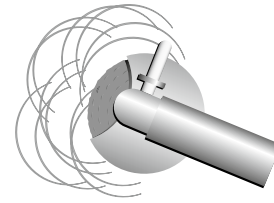
If grit blasting is not possible, roughen the surface using a coarse grinding wheel (60 grit or coarser) or a needle gun to achieve the desired profile. (See [Figure 2.](#))

Using coarse sandpaper or a file is acceptable only if the first two methods cannot be utilized.

After roughening, the surface must be thoroughly cleaned again with LOCTITE ODC-Free Cleaner and Degreaser or LOCTITE Natural Blue® Biodegradable Cleaner and Degreaser. Repairs should be made as soon as possible to avoid rusting.



[Figure 1.](#) For best results, abrasive blast the application surface.



[Figure 2.](#) Coarse grinding of the surface is also recommended for surface preparation.

Technical References

WET SURFACES

Exceptions to having a dry surface are when using LOCTITE Fixmaster® Wet Surface Repair Putty, Fixmaster® Underwater Repair Epoxy or Fixmaster® Metal Magic Steel™. These products will cure in the presence of water.

Stop all leakage or seepage by:

- ✓ Turning off the water flow
- ✓ Fitting a wooden peg or sheet metal screw
- ✓ Stuffing with cork, wax, rags or any other suitable material (See Figure 3.)

If the leak is caused by corrosion, the side wall may be weak. Open the hole to a point where the wall is close to its original thickness. Then plug the opening using a suitable material.

All surface condensation, wetness or dampness must be wiped clean and dried off using a hot air gun or similar device.

Continue surface preparation in accordance with the information on page 19 about Surface Cleaning.

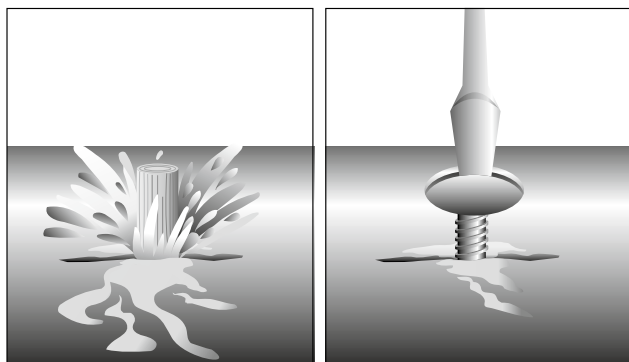


Figure 3. Stop leaks with a wooden plug or screw inserted in area of seepage.

Did You Know?

Surface Profile

Abrasive blasting not only removes visible surface rust and contaminants, but also creates a rugged, miniature mountain and valley finish. This surface roughness is known as Surface Profile.

Surface Profile is critical to coating performance as it improves adhesion by increasing surface area and by providing a keyed anchor pattern.

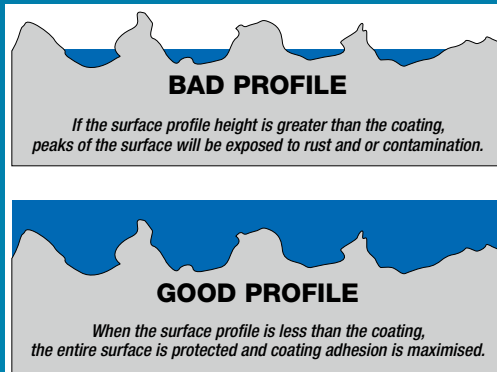
Surface Profiles will vary depending on the type of abrasive particles, equipment and technique utilized. It is critical to achieve the correct profile depth specified for a particular coating.

Inadequate quality control and lack of restriction of large abrasive particle sizes for thin coats can lead to peaks of the surface not being adequately covered. In addition, more profile means using more product to cover the surface!

The diagrams below illustrate how profile must be matched to the product specification.

Surface Profile

Chemical contaminants that are not readily visible, such as chlorides and sulphates, attract moisture through coating systems, resulting in premature failure. Therefore, it is fundamentally important to chemically clean all substrates with an industrial-strength cleaner and degreaser such as LOCTITE Natural Blue®.



LOCTITE Composites applications require a minimum 75 micron surface profile.

Surface Preparation Grades of Blast

RUST GRADE

- A Steel with mill scale layer intact and very minor, or no rusting
- B Steel with spreading surface rust and the mill scale commenced flaking
- C Rusty steel with mill scale layer flaked and loose or lost, but only minor occurrence of pitting
- D Very rusty steel with mill scale layer all rusted and extensive occurrence of pitting

BLAST CLASS

- 1 (SP-7/N4) Very light over clean with removal of loose surface contaminants
- 2 (SP-6/N3) Substantial blast clean with wide spread, visible contaminant removal and base metal color appearing
- 2.5 (SP-10/N2) Intensive blast clean leaving shading grey metal with only contaminants
- 3 (SP-5/N1) Complete blast clean with consistent metal color all over and no visible contaminants



Mixing Tips

The following tips are designed to facilitate the process of working with LOCTITE polymer composite products under a variety of conditions.

MIXING

Thorough mixing, in proper ratio, is critical to the performance of the material. Whenever possible, the complete container should be mixed at one time. If the material is to be mixed in separate batches, the user must be careful to adhere to the mix ratios, which appear on the product label.

The material is mixed by adding hardener to resin. The mixing process is complete when the product is free from streaks or other variances. Failure to thoroughly mix the material will cause soft spots or overall failure of the product. Mixing should take three to five minutes.

Large masses (over one pound) can be mixed more easily by turning out the resin and hardener onto a clean, disposable surface. Mix and knead material with a putty knife or other flat tool until the product is thoroughly mixed. Do not fold material into the mix as this process can cause air entrapment that will weaken the cured product.



Composite is turned out onto a disposable surface to ensure proper mixing.

CURE

Polymer composite compounds begin to cure, or harden, when the hardener is added to the resin. Curing is by a chemical reaction that causes exotherming, or the process of giving off heat. There are some basic principles of working with composite compounds that every user should understand:

Cure Times Are Mass Dependent. The larger the mass mixed, the faster it will cure. If the mixed material cannot be applied during the working time specified on the product label, mix it in smaller batches.

Cure Times Are Temperature Dependent. The higher the temperature, the faster the product will cure. Ideal mixing temperature is between 55°F and 80°F.

If the application is to occur at higher temperatures, the product should be stored at room temperature or slightly below to slow down the chemical reaction between resin and hardener.

At lower temperatures, the epoxy will cure very slowly or may fail to cure at all. To speed up the cure at low temperatures, store product at room temperature and heat parts to be repaired prior to application. The repaired area can also be heated with a heat gun upon completion of the application.

Most polymer composite compounds are skin and eye irritants, and many hardeners are corrosive. Always wear appropriate gloves and goggles or face shield during mixing and handling. Observe good industrial safety practices, and review product Material Safety Data Sheet (MSDS) prior to use for complete precautionary information.

Application Tips

FOR MAXIMUM BOND

Pre-coat the application surface by rubbing the mixed composite into the substrate. This technique, called “wetting out the surface,” helps the repair material fill all the crevices in the application surface, creating a superior bond between the composite and substrate. The rest of the mixed product can then be applied over the pre-coat to finish the application.



ELIMINATING AIR ENTRAPMENT

Use a heat gun (do not use an open flame) to pull air bubbles out of cast composite. Heat will cause bubbles to rise to the top and dissipate.



POURING LIQUID COMPOSITES

Avoid air entrapment in cured composite by pouring close to the mold in a steady, even stream.



CREATING A SMOOTH FINISH

Smooth out the uncured product with a warm trowel for a smooth, glossy finish. A heat gun can also be used to create a smooth finish.



Typical Wear Resistant Coating Repair

Pump Repairs: Pump castings, impellers and volutes wear due to corrosion, erosion, cavitation and mechanical damage. All these forms of damage can be effectively and economically repaired with LOCTITE polymer composite products. The two main areas subject to wear are the volute and the impeller.

REPAIRING VOLUTES

- 1. Surface Preparation:** To prepare the surface, remove all rust, old paint and other debris from the area to be repaired. For best results, abrasive blast large areas or, use a needle gun or grinder. Prepare the area at least ½ inch (12 mm) greater than the repair area on all sides.

Where the equipment has been pumping salt solutions, abrasive blast all areas to be treated and leave for 24 hours, after which time the entire area should be given a brush blast to remove all salts, which may have sweated to the surface.

Sandblast to sound metal and clean with LOCTITE ODC-Free Cleaner and Degreaser or LOCTITE Natural Blue® Biodegradable Cleaner and Degreaser.

- 2. Build Up:** Build up the gouges and worn areas on the inside of the body by applying a smooth coating of composite coating. To avoid air entrapment, use a suitably shaped, thin plastic or metal applicator to apply a thin coat of product to all faces of the cavities. (See [Figure 1](#).)

- 3. Fill In:** To fill the cavities, press composite into the repair area. Use the applicator to smooth and shape the repair area to the original contour. Alternatively, the composite can be used to build up the repair area slightly larger than the required contour. After the composite has cured, it can be ground down to the original contour using a combination of grinding wheel and sanding disc attachments.

- 4. Top Coat:** Top coat the entire volute area with Brushable Ceramic Epoxy to increase pump efficiency. (See [Figure 2](#).)

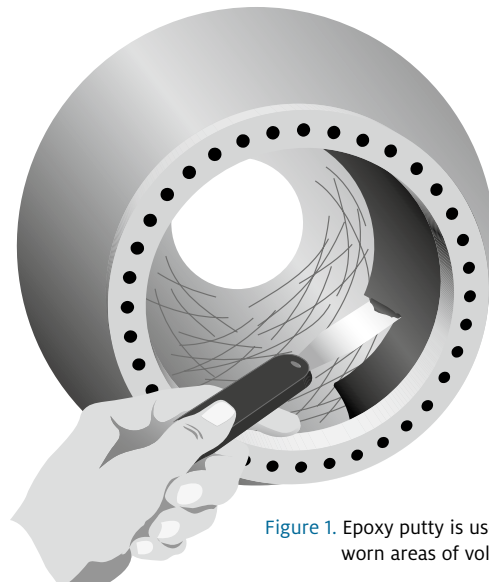


Figure 1. Epoxy putty is used to rebuild worn areas of volute.

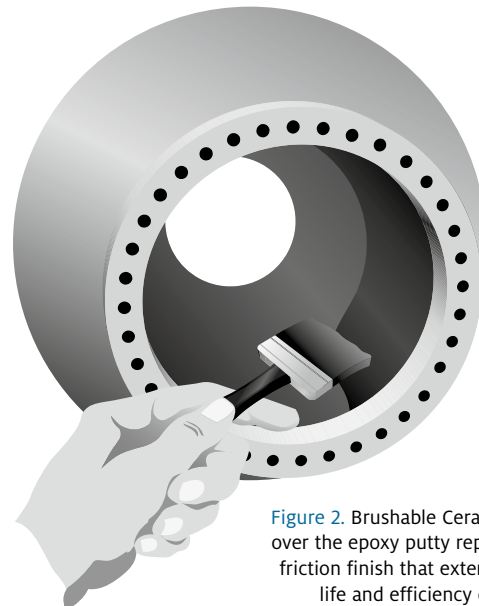


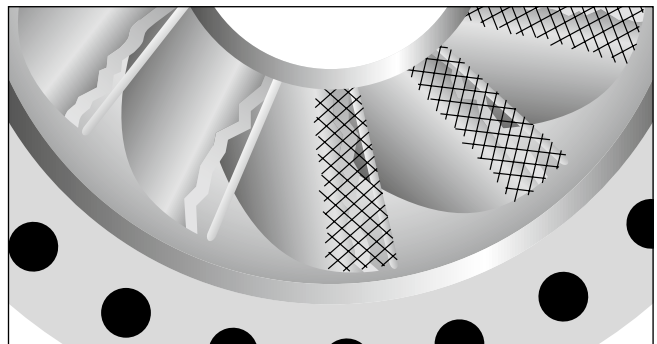
Figure 2. Brushable Ceramic Epoxy applied over the epoxy putty repair provides a low friction finish that extends the operating life and efficiency of the pump.

Application Tips

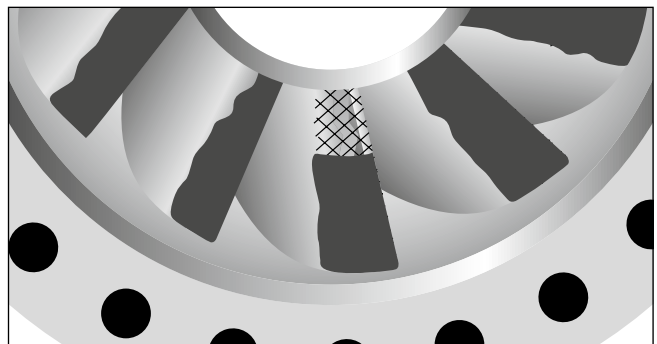
REPAIRING IMPELLERS

- 1. Surface Preparation:** Prepare the surface as in [Figure 1](#) on page 22. To aid the penetration of the composite coating into cavities, warm the impeller to 120°F to 140°F (50°C to 60°C) before applying product.
- 2. Severe Erosion:** For severely eroded blades, tack weld expanded metal from the edge to be rebuilt to the existing metal surface. (See [Figure 3](#).)
- 3. Apply:** Apply the composite over the expanded metal, forcing the epoxy through the mesh, being careful to avoid air entrapment. Smooth the finish with a thin plastic or metal applicator. (See [Figure 4](#).)
- 4. Finish:** To finish the repair, brush on thinly a 15 to 20 ml coating of LOCTITE Nordbak® Brushable Ceramic to the entire impeller area, filling in porous spots in the casting. Once the first coat has cured, apply a second coat of LOCTITE Nordbak® Brushable Ceramic. (See [Figure 5](#).)

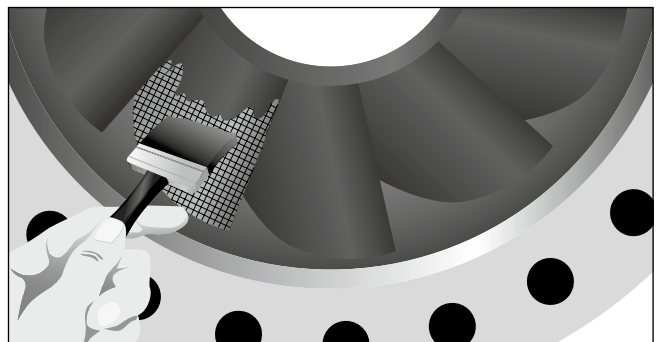
Note: After full cure, balance the impeller before returning to service.



[Figure 3](#). Expanded metal, used over damaged blades, rebuilds and reinforces the repair area.



[Figure 4](#). Coat expanded metal with epoxy and smooth out finish.



[Figure 5](#). Apply two coats of LOCTITE Nordbak® Brushable Ceramic seal to the metal to create a low-friction surface.

Frequently Asked Questions

Q: What is a polymer composite?

A: An epoxy or urethane (polymer) system that contains a reinforcement component such as fibers, beads, powders, etc. These added composites increase performance.

Q: Why would I use a polymer composite to protect components from wear and abrasion over a urethane?

A: Polymer composites are used where sliding abrasion or wear is a problem. Urethanes are better suited when impact abrasion is a problem.

Q: Why is surface preparation so important?

A: A successful application is largely dependent on surface preparation. The application surface must be free from all contamination. Removal of oil, grease, dust, rust and, for most products, moisture*, will greatly enhance application success. For more detailed surface preparation techniques, refer to product description sheets.

Q: Will my cure time be affected if I bring in a cold part from outdoors into a warm room?

A: If a part is cold and the ambient air is warm, cure time will be extended. Both the air and the part should be room temperature to get the prescribed cure time and strength.

Q: If I add more hardener, will that make it cure faster?

A: No, epoxy systems have been formulated to contain an exact amount of resin to react with an exact amount of hardener. If excess hardener is added, it will remain unreacted and the physical properties will be negatively affected.

Q: Can I add solvents to make them thinner (easier to work with)?

A: The use of solvent is not recommended due to the possibility of trapping the solvent in the cured systems, causing voids or soft spots.

Q: Can I mix just the amount I need instead of the entire amount of the composite?

A: Yes, Polymer Composites are packaged as kits in the exact ratio. Partial kits, however, can be mixed if measured precisely.

Q: When can I put my equipment back in service?

A: Functional cure time varies with product type and application temperature; refer to the product description sheets for individual product information.

Q: How long will the products last?

A: Durability of a product will depend on the surface preparation, applicator skill, environmental conditions, chemical exposure, etc.

Q: Can I remove a polymer composite after it has cured?

A: Polymer composites have great adhesive properties and are designed not to be removed. If removal is necessary, LOCTITE Chisel® gasket remover may be used.

Q: Do I have to use expanded metal when applying LOCTITE Wear Resistant Coatings?

A: Expanded metal is recommended for vertical or overhead surfaces. On applications where it is difficult or impossible to tack weld expanded metal, a coating of LOCTITE Fixmaster® Brushable Ceramic may be applied. Allow it to partially cure for approximately two hours; then apply the wearing compound over the brushable ceramic.

* **NOTE:** Products such as LOCTITE Fixmaster® Metal Magic Steel™ and LOCTITE Fixmaster® Wet Surface Repair Putty contain hardener systems that can be applied to damp and underwater surfaces.

Troubleshooting Guide

PROBLEM	POSSIBLE CAUSES	SUGGESTED SOLUTION
Curing too fast	<ul style="list-style-type: none"> • Air temperature too high • Application surface too hot • Composite temperature too hot • Too much material being mixed 	Working time and cure time depend on temperature and the amount of material being mixed; the higher the temperature, the faster the cure. The larger the amount of material mixed, the faster the cure. To slow the cure at high temperatures, mix in smaller amounts to prevent rapid curing and/or cool resin/hardener components and application surface.
Curing too slowly	<ul style="list-style-type: none"> • Air temperature too cold • Composite temperature too cold • Application surface too cold 	To speed the cure at low temperatures (<60°F), store at room temperature (70°F ± 5°F) and/or pre-heat application surface until warm to the touch.
Loss of adhesion	<ul style="list-style-type: none"> • Surface contamination • Surface too smooth 	Prepare surface by grit blasting, if possible. For less severe applications, roughening the surface with hand tools is suitable. Solvent clean with a residue-free cleaner such as LOCTITE ODC-Free Cleaner and Degreaser or LOCTITE Natural Blue® Biodegradable Cleaner and Degreaser. Product should be applied as soon as possible after surface preparation to avoid surface rust or contamination.
Excessive shrinking and cracking	<ul style="list-style-type: none"> • Too much product being applied or poured resulting in high heat buildup 	Applying too much material at one time will cause excessive heat buildup, which will cause shrinking and cracking. Apply material in layers of one inch at a time, allowing each layer to cool before applying the next.

LOCTITE Fixmaster® and Nordbak® Chemical Compatibility Chart

RANGE SUMMARY ONLY.

For maximum chemical capability use LOCTITE Fixmaster® High Performance Quartz or LOCTITE Nordbak® Chemical Resistant Coating.

Please consult your Henkel application engineer if further product specific information is required.

COMPATIBLE..... ✓
NOT COMPATIBLE..... ✗

Acetic Acid	✗
Acetone.....	✗
Alcohol, Amyl.....	✓
Alcohol, Benzyl.....	✓
Alcohol, Butyl.....	✓
Alcohol, Ethyl.....	✗
Alcohol, Methyl.....	✗
Alcohol, Propyl.....	✓
Alum, Ammonium.....	✓
Alum, Chrome.....	✓
Alum, Potassium.....	✓
Alum, Sodium.....	✓
Aluminum Chloride.....	✓
Aluminum Sulphate.....	✓
Ammonia Solutions.....	✓
Ammonium Carbonate.....	✓
Ammonium Chloride.....	✓
Ammonium Nitrate.....	✓
Ammonium Phosphate.....	✓
Ammonium Sulphate.....	✓
Amyl Acetate	✗
Aniline.....	✓
Aniline Dyes.....	✓
Asphalt, Emulsions.....	✓
Asphalt, Molten.....	✓
Barium Carbonate.....	✓
Barium Chloride.....	✓
Barium Hydroxide.....	✓
Barium Sulphate.....	✓
Benzene.....	✗
Brake Fluids.....	✓
Butyl Acetate	✗
Calcium Bisulphate.....	✓
Calcium Carbonate.....	✓
Calcium Chloride.....	✓
Calcium Hydroxide.....	✓
Calcium Sulphate.....	✓
Carbon Tetrachloride.....	✗
Carbonic Acid.....	✓
Caruba Wax.....	✓
Chalk.....	✓
China Clay.....	✓
Chloroacetic Acid.....	✗
Chlorobenzene, Dry.....	✗
Chloroform, Dry.....	✗
Chlorosulfonic Acid.....	✗
Chromium Chloride.....	✓
Chromium Sulphate.....	✓
Clay.....	✓
Creosote.....	✗
Creosote, Cresylic Acid.....	✗
Cyclohexane.....	✓

Diacetone Alcohol.....	✗
Dibutyl Phthalate.....	✓
Drying Oil.....	✓
Ethyl Acetate.....	✗
Ethylene Glycol.....	✓
Ferric Chloride.....	✓
Ferric Nitrate.....	✓
Ferric.....	✓
Ferrous Chloride.....	✓
Ferrous Sulphate, 10%.....	✓
Ferrous Sulphate (Sat).....	✓
Fertilizer Sol.....	✓
Freon® ★.....	✓
Fuel Oil.....	✓
Gasoline, Aviation.....	✓
Gasoline, Motor.....	✓
Glue, Animal Gelatine.....	✓
Glue, Plywood.....	✓
Glycerol.....	✓
Glycol Amine.....	✓
Grease, Lubricating.....	✓
Heptane.....	✓
Hexane.....	✓
Hydrogen Peroxide (dil).....	✓
Hydrogen Peroxide (con).....	✓
Ink.....	✓
Isocetane.....	✓
Isopropyl Alcohol.....	✓
Kerosene.....	✓
Lactic Acid.....	✓
Magnesium Bisulfite.....	✓
Magnesium Chloride.....	✓
Magnesium Hydroxide.....	✓
Magnesium Sulphate.....	✓
Maleic Acid.....	✓
Manganese Chloride.....	✓
Mercuric Chloride.....	✓
Mercury.....	✓
Mercury Dry.....	✓
Methyl Acetate.....	✗
Methyl Cellosolve.....	✗
Methyl Ethyl Ketone.....	✗
Methylene Chloride.....	✗
Mineral Spirits.....	✓
Mud.....	✓
Naphtha.....	✓
Naphthalene.....	✓
Nickel Ammonium Sulphate.....	✓
Nickel Chloride.....	✓
Nickel Sulphate.....	✓
Nitric Acid, 20%.....	✗
Oil, Creosote.....	✓
Oil, Emulsified.....	✓
Oil, Fuel.....	✓
Oil, Lubricating.....	✓
Ozone, Wet.....	✓
Paint Remover, Sol. Type.....	✓
Paraffin, Molten.....	✓
Paraffin, Oil.....	✓
Perchlorethylene (Dry).....	✗

Petroleum Ether.....	✓
Petroleum Jelly.....	✓
Phosphoric Acid (10% cold).....	✓
Phosphoric Acid (10% hot).....	✓
Phthalic Acid.....	✓
Potash.....	✓
Potassium Bromide.....	✓
Potassium Carbonate.....	✓
Potassium Chlorate.....	✓
Potassium Chloride Sol.....	✓
Potassium Chromate.....	✓
Potassium Dichromate.....	✓
Potassium Ferricyanide.....	✓
Potassium Hydroxide.....	✓
Potassium Iodide.....	✓
Potassium Nitrate.....	✓
Potassium Permanganate.....	✓
Potassium Sulphate.....	✓
Propyl Alcohol.....	✓
Propylene Glycol.....	✓
Rosin, in Alcohol.....	✓
Rosin, Size.....	✓
Rosin, Wood.....	✓
Rubber, Latex.....	✓
Sewage.....	✓
Silver Nitrate.....	✓
Soap Solutions (Stearates).....	✓
Sodium Acetate.....	✓
Sodium Aluminate.....	✓
Sodium Bisulfite.....	✓
Sodium Bromide.....	✓
Sodium Carbonate.....	✓
Sodium Chlorate.....	✓
Sodium Cyanide.....	✓
Sodium Hydroxide.....	✓
Sodium Hydroxide (20% Cold).....	✓
Sodium Hydroxide (20% Hot).....	✓
Sodium Hydroxide (50% Cold).....	✓
Sodium Hydroxide (50% Hot).....	✓
Sodium Hydroxide (70% Cold).....	✓
Sodium Hydroxide (70% Hot).....	✓
Sodium Metasilicate.....	✓
Sodium Nitrate.....	✓
Sodium Phosphate, Mono.....	✓
Sodium Phosphate, Tri.....	✓
Sodium Silicate.....	✓
Sodium Sulphide.....	✓
Stannic Chloride.....	✓
Starch.....	✓
Starch Base.....	✓
Stearic Acid.....	✓
Steep Water.....	✓
Sterilization Steam.....	✓
Styrene.....	✓
Sulphuric Acid (7 to 40%).....	✗
Sulphuric Acid (40 to 75%).....	✗
Sulphuric Acid (75 to 95%).....	✗
Sulphuric Acid (95 to 100%).....	✗
Tannic Acid (cold).....	✓
Tamin.....	✓
Tar and Tar Oil.....	✓
Tartaric Acid.....	✓

Tetraethyl Lead.....	✓
Toluene.....	✗
Trichlorethylene.....	✗
Trichlorethylene, Dry.....	✗
Turpentine.....	✓
Water, Acid, Below pH 7.....	✓
Water, Alkaline, Over pH 8.....	✓
Water, De-Ionized.....	✓
Water, De-Ionized, Low Conductivity.....	✓
Water, Gritty.....	✓
Water, Mine Water.....	✓
Water, pH 7 to 8.....	✓
Water, Potable.....	✓
Water, River.....	✓
Water, Sandy.....	✓
Water, "White", low pH.....	✓
Water, "White", high pH.....	✓
Wax.....	✓
Wax, Emulsions.....	✓
Xylene.....	✗
Zinc Chloride.....	✓
Zinc Galvanizing.....	✓
Zinc Hydrosulphite.....	✓
Zinc Sulphate.....	✓

GASES

Acetylene.....	✓
Air.....	✓
Butane.....	✓
Carbon Dioxide.....	✓
Carbon Monoxide.....	✓
Chlorine Dry.....	✓
Chlorine Wet.....	✓
Coke, Oven Gas (Cold).....	✓
Coke, Oven Gas (Hot).....	✓
Ethane.....	✓
Gas, Manufacturing.....	✓
Gas, Natural.....	✓
Hydrogen Gas (Cold).....	✓
Methane.....	✓
Natural Gas, Dry.....	✓
Nitrogen Gas.....	✓
Nitrous Oxide.....	✓
Ozone.....	✓
Producer Gas, 50 PSI.....	✓
Propane.....	✓
Sulphur Dioxide.....	✓
Sulphur Dioxide (Dry).....	✓
Sulphur Trioxide Gas.....	✓

NOTE: 1. The above information does not constitute a recommendation of adhesive use. It is intended only as a guide for consideration by the purchaser with the expectation of favorable confirming test results. It is impossible to test an adhesive's reaction with the multitude of chemicals in existence, therefore, compatibility has been estimated based on a wide variety of customer experiences.

2. With the stringent action of such chemicals as Freon®, strong cold acids and caustics, thorough evaluation is suggested. Sealing of hot corrosive chemicals is not recommended.

3. Refer to technical data sheet or contact Henkel technical services for use with chemicals not covered by this information.

(This is a list of chemical stability only. It does not constitute approval for use in the processing of foods, drugs, cosmetics, pharmaceuticals and ingestible chemicals.)

LOCTITE brand adhesives are not recommended for use in pure oxygen or chlorine environments or in conjunction with strong oxidizing agents, as explosive reaction can result.

★ Freon® is a registered trademark of E.I. du Pont de Nemours and Company.

Application Selector Guide

PRODUCT	FINE PARTICLE ABRASION	MULTIPLE PARTICLE ABRASION	IMPACT RESISTANCE	CHEMICAL CORROSION PROTECTION	HIGH TEMPERATURE RESISTANCE	FAST CURE	CORROSION PROTECTION	TILE INSTALLATION	PUMP REPAIR	ELBOWS	FAN HOUSINGS	CYCLONES	CHUTES
SLIDING ABRASION AND WEAR RESISTANCE (Coarse/Large Particle)													
LOCTITE Nordbak® Wearing Compound									X	X	✓	X	✓
LOCTITE Nordbak® Fast Cure Wearing Compound						✓			X	X	✓	X	✓
LOCTITE Nordbak® High Temperature Wearing Compound					✓				X	X	✓	X	✓
LOCTITE Nordbak® Ultra High Temperature Wearing Compound					✓				X	X	✓	X	✓
LOCTITE Nordbak® Combo Bead Wearing Compound	X	✓								X	X	X	X
SLIDING ABRASION AND WEAR RESISTANCE (Fine Particle)													
LOCTITE Nordbak® Pneu-Wear	✓	X							✓	✓	X	✓	X
LOCTITE Nordbak® Fast Cure Pneu-Wear	✓	X				✓			✓	✓	X	✓	X
LOCTITE Nordbak® High Temperature Pneu-Wear	✓	X			✓				✓	✓	X	✓	X
LOCTITE Nordbak® Ultra High Temperature Pneu-Wear	✓	X			✓				✓	✓	X	✓	X
LOCTITE Fixmaster® Wear Resistant Putty	✓	X							✓	✓	X	✓	X
LIQUID/SLURRY TURBULENCE RESISTANCE													
LOCTITE Nordbak® Brushable Ceramic – Grey and White				X			✓		X				
LOCTITE Nordbak® High Temperature Brushable Ceramic				X	✓		✓		X				
LOCTITE Nordbak® Sprayable Ceramic				X			✓		X	X	X	X	X
IMPACT WEAR RESISTANCE													
LOCTITE Nordbak® High Impact Wearing Compound			✓										
LOCTITE Fixmaster® Flex 80™ Putty			✓										
SPECIALTY WEAR RESISTANCE													
LOCTITE PC9628™ Nordbak® Castable Wearing Compound										✓		✓	
LOCTITE Nordbak® Ceramic Tile Adhesive			X					✓					
EXTREME CORROSION/EROSION RESISTANCE													
LOCTITE Nordbak® Chemical Resistant Coating				✓			✓						

✓ Preferred Choice

X Good Choice

Wear Resistant Coatings Properties Chart

PRODUCT	Page #	Item #	Container	COVERAGE (FT² @ 1/4" THICKNESS)	COLOR	MAXIMUM OPERATING TEMPERATURE (°F)	COMPREHENSIVE STRENGTH (PSI)	HARDNESS (SHORE D)	WORKING TIME (MINUTES) 77°F	FUNCTIONAL CURE (HOURS) 77°F	MIX RATIO BY VOLUME (R:H)	MIX RATIO BY WEIGHT (R:H)	AGENCY APPROVALS
SLIDING ABRASION AND WEAR RESISTANCE (Coarse/Large Particle)													
LOCTITE Nordbak® Wearing Compound	6	1324008	5 LB. KIT	1.75	GREY	250	16,000	90	30	7	2:1	2:1	NEHC
		1323940	25 LB. KIT	8.75									
LOCTITE Nordbak® Fast Cure Wearing Compound	7	96373	6 LB. KIT	2.3	BLUE	225	10,000	90	10	3	2:1	2:1	N/A
LOCTITE Nordbak® High Temperature Wearing Compound	6	99112	25 LB. KIT	8.7	GREY	450	15,000	90	30	▼	4:1	3.9:1	N/A
LOCTITE Nordbak® Ultra High Temperature Wearing Compound	6	96392	25 LB. KIT	8.7	RED	550	N/A	90	30	▼	2.5:1	2.85:1	N/A
LOCTITE Nordbak® Combo Bead Wearing Compound	7	1324571	6 LB. KIT	2.3	GREY	250	13,000	90	25	8	2:1	2:1	N/A
SLIDING ABRASION AND WEAR RESISTANCE (Fine Particle)													
LOCTITE Nordbak® Pneu-Wear	8	98383	3 LB. KIT	1.1	GREY	250	15,000	85	30	6	4:1	4:1	ABS, CFIA, NEHC, LLOYDS
		98382	25 LB. KIT	9									
LOCTITE Nordbak® Fast Cure Pneu-Wear	9	96363	6 LB. KIT	2.3	BLUE	225	12,000	90	10	3	2:1	2:1	CFIA
		1117828†	25 LB. KIT	9.6									
LOCTITE Nordbak® High Temperature Pneu-Wear	8	98372	25 LB. KIT	8.7	GREY	450	15,000	90	30	▼	4:1	4:1	N/A
LOCTITE Nordbak® Ultra High Temperature Pneu-Wear	8	96332	25 LB. KIT	8.8	RED	550	N/A	90	30	▼	2:1	2.27:1	N/A
LOCTITE Fixmaster® Wear Resistant Putty	9	98742	1 LB. KIT	0.37	GREY	225	11,600	89	30	6	2:1	2:1	ABS, CFIA, NEHC, LLOYDS
		98743	3 LB. KIT	1.11									
LIQUID/SLURRY TURBULENCE RESISTANCE													
LOCTITE Nordbak® Brushable Ceramic	10	98733	2 LB. KIT	12*	GREY	200	10,180	85	30	6	2.75:1	4.8:1	CFIA, NSF, LLOYDS
		98732	6 LB. KIT	36*			10,866		15	5	2.8:1	4.5:1	
		96443	2 LB. KIT	12*	WHITE								
LOCTITE Nordbak® High Temperature Brushable Ceramic	11	96433	2 LB. KIT	12*	RED	550	16,000	90	120	▼	2.6:1	4.25:1	N/A
		997369†	12 LB. KIT	72*									
LOCTITE Nordbak® Sprayable Ceramic	11	1389509	900 ML	20*	GREEN	200	15,400	86	40	4	2:1	2:1	N/A
IMPACT WEAR RESISTANCE													
LOCTITE Nordbak® High Impact Wearing Compound	12	1327836	25 LB. KIT	8.75	GREY	250	12,000	85	30	6	2:1	2:1	N/A
LOCTITE Fixmaster® Flex 80™ Putty	12	97423	1 LB. KIT	94**	BLACK	180	N/A	87††	10	8	2.5:1	2.6:1	ABS
		97422	6 LB. KIT	560**									
SPECIALTY WEAR RESISTANCE													
LOCTITE PC9628™ Nordbak® Castable Wearing Compound	13	98992	25 LB. KIT	277 IN³	GREY	225	18,500	90	30	6	2:1	6.8:1	N/A
LOCTITE Nordbak® Ceramic Tile Adhesive	13	1690646	20 LB. KIT	12	BEIGE	200	14,000	88	60	12	1:1	1:1.25	N/A
EXTREME CORROSION/EROSION RESISTANCE													
LOCTITE Nordbak® Chemical Resistant Coating	14	96092	12 LB. KIT	74*	GREY	150 WET/ 7,200 DRY	10,000	83	N/A	N/A	2.3:1	3.4:1	CFIA

Properties based on mixing 1 lb. mass at 77°F, ultimate cure.

* 20 mil thickness.

** inch² at ¼ inch thickness.

▼ Requires heat cure. See Technical Data Sheet.

NEHC = Navy Environmental Health Center.

[†] Made-to-Order Item.^{††} Shore A

Notes

[illegible]



For your local LOCTITE Adhesives and Sealants Specialist, the nearest authorized LOCTITE products distributor, to place an order, to arrange an in-plant seminar or for technical product assistance, call 1.800.LOCTITE (562.8483) in the U.S.A., or call 1.800.263.5043 within Canada.

U.S.A.

Henkel Corporation
Engineering Adhesives
One Henkle Way
Rocky Hill, CT 06067
Tel: 1.800.LOCTITE (562.8483)
Tel: 1.860.571.5100
Fax: 1.860.571.5465
www.henkelna.com/mro
www.loctite.com

CANADA

Henkel Canada Corporation
2515 Meadowpine Blvd.
Mississauga, Ontario, Canada L5N 6C3
Tel: 1.800.263.5043 (within Canada)
Tel: 905.814.6511
Fax: 905.814.6522