

Face and Back Mapping Directly on the MOSS Tablet

MOSS now has the ability to perform Face and Back Mapping directly on the MOSS tablet, allowing Field Geologists to digitize their work in a fraction of the time. Studies indicate that each site's Field Geologist can save a minimum of 8 hours of digitizing per week using MOSS's face mapping tools.

MOSS has three available options to perform Geo-Mapping:

1. Geo-Mapping using the Leica Total Station laser traces the geological structures and ore contacts directly onto the MOSS tablet in georeferenced XYZ coordinates for any face and heading. (*fig.1*)
2. Geo-Mapping without the Leica Total Station provides the Geologist with the tools to estimate and sketch the ore contacts directly onto the MOSS tablet in georeferenced XYZ coordinates.
3. Importing the sketch from the field and digitizing. (*fig.2*)



Leica MS60 Multistation paired with the MOSS Tablet

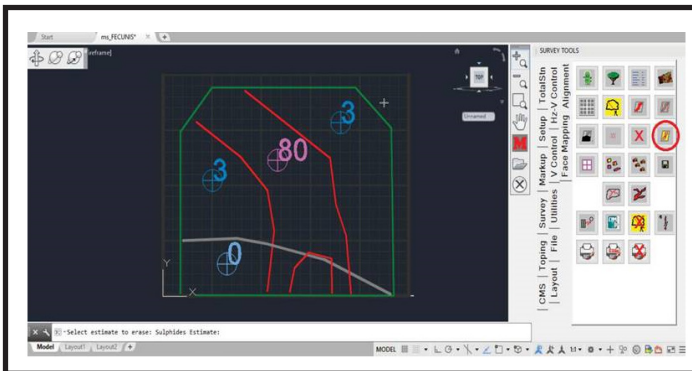


fig.1

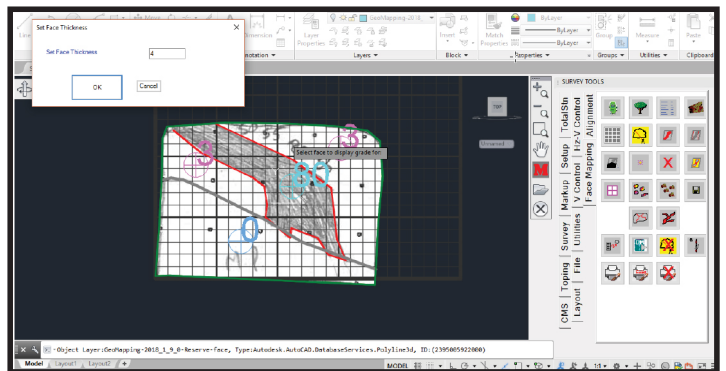


fig.2

End Product

Geo Face Mapping plotted layout for all three options. (*fig.3*)

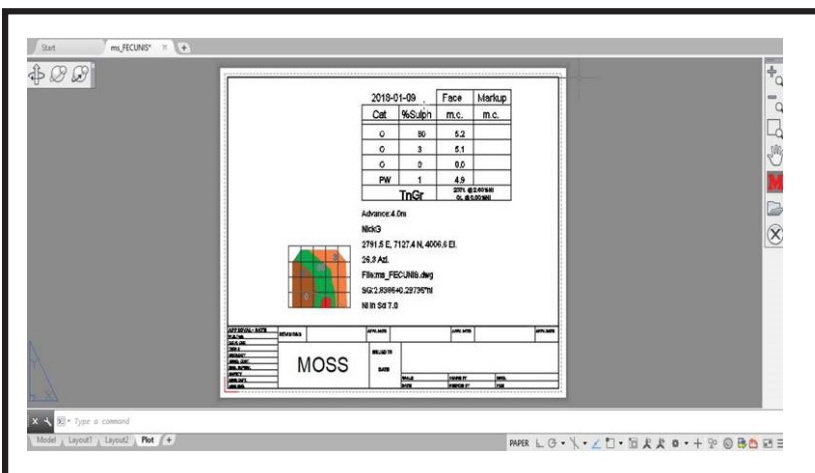


fig.3



For more information on the Miner Operated Survey System visit MOSS online at www.moss.rocks or contact Bruno Lalonde: BrunoL@nsscanada.com